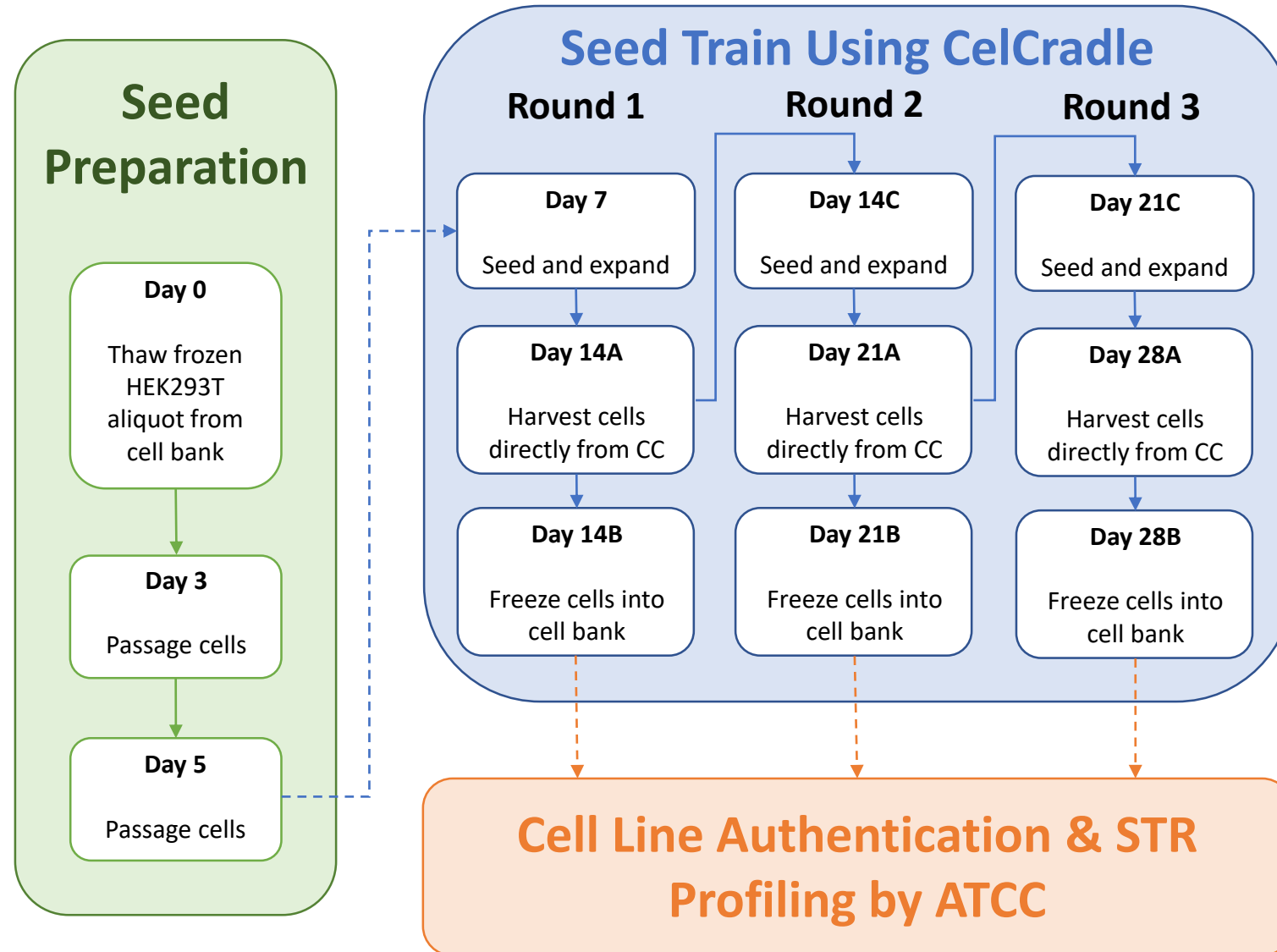




**Using TideMotion Technology To Perform
HEK293T Seed Train**

PROCESS FLOW DIAGRAM

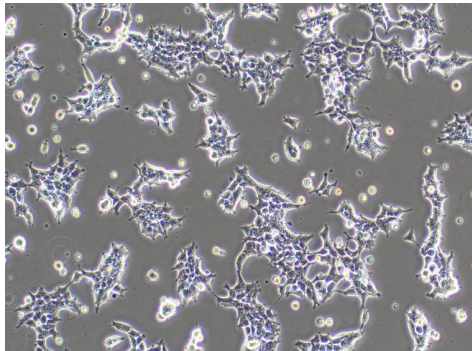


Cell Morphology and STR Profiling

Cells harvested directly from each round of CelCradle Seed Train were seeded onto 2D flask to check for morphology and send for third party cell line authentication

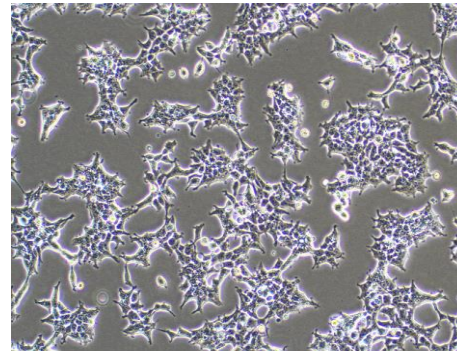
Round #1 – Passage 18

STRA10130



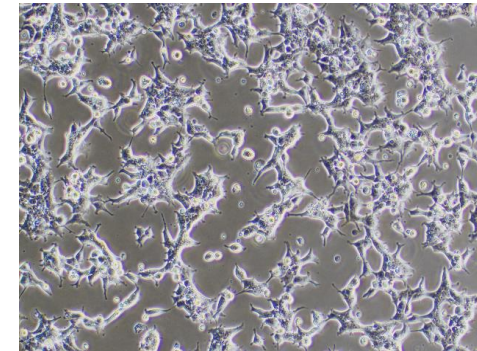
Round #2 – Passage 19

STRA10129



Round #3 – Passage 20

STRA10128



| % Match | ATCC® Cat. No. | Designation | D5S818 | D13S317 | D7S820 | D16S539 | vWA | THO1 | AMEL | TPOX | CSF1PO |
|---------|----------------|--|--------|---------|--------|---------|-------|-------|------|------|--------|
| 100 | STRA10130 | HEK293T #1 | 8,9 | 12,14 | 11 | 9,13 | 16,19 | 7,9,3 | X | 11 | 11,12 |
| 100 | CRL-3216 | 293T; Embryonic Kidney Cells; Human (Homo sapiens) | 8,9 | 12,14 | 11 | 9,13 | 16,19 | 7,9,3 | X | 11 | 11,12 |

| % Match | ATCC® Cat. No. | Designation | D5S818 | D13S317 | D7S820 | D16S539 | vWA | THO1 | AMEL | TPOX | CSF1PO |
|---------|----------------|--|--------|---------|--------|---------|-------|-------|------|------|--------|
| 100 | STRA10129 | HEK293T #2 | 8,9 | 12,14 | 11 | 9,13 | 16,19 | 7,9,3 | X | 11 | 11,12 |
| 100 | CRL-3216 | 293T; Embryonic Kidney Cells; Human (Homo sapiens) | 8,9 | 12,14 | 11 | 9,13 | 16,19 | 7,9,3 | X | 11 | 11,12 |

| % Match | ATCC® Cat. No. | Designation | D5S818 | D13S317 | D7S820 | D16S539 | vWA | THO1 | AMEL | TPOX | CSF1PO |
|---------|----------------|--|--------|---------|--------|---------|-------|-------|------|------|--------|
| 100 | STRA10128 | HEK293T #3 | 8,9 | 12,14 | 11 | 9,13 | 16,19 | 7,9,3 | X | 11 | 11,12 |
| 100 | CRL-3216 | 293T; Embryonic Kidney Cells; Human (Homo sapiens) | 8,9 | 12,14 | 11 | 9,13 | 16,19 | 7,9,3 | X | 11 | 11,12 |